

# ESG Highlights

## Accreditation



2019 Award for Excellence  
in Corporate Disclosure  
— Industries —  
SAA The Securities Analysts  
Association of Japan



Garnered solid reputation for our investor engagement  
and other IR activities

The Securities Analysts Association of Japan  
Japan Investor Relations Association



SMBC Nikko Securities and SMBC were selected as  
financial institutions engaged in ESG financing

MOE



攻めのIT経営銘柄2019  
Competitive IT Strategy Company

Recognized as a company practicing Competitive IT  
Strategy to improve corporate value

METI  
Tokyo Stock Exchange



Selected five times in the Nadeshiko Brand  
selection of listed companies excelling at  
empowering female employees

METI  
Tokyo Stock Exchange



Acquired Top Gold Rating in PRIDE index  
evaluation for LGBT-related initiatives

work with Pride



Selected four times as company exercising  
superior health and productivity management

METI



Recognized as company that stands on  
the forefront of sustainable growth by  
heightening productivity through  
workstyle reforms

Nikkei

## Support for initiatives in Japan and overseas

As a global corporate citizen of the global society, SMBC Group is fully aware of the social impact of financial institutions, and it supports the following initiatives in Japan and overseas (the action guidelines for the corporate activities and principles).



# ESG Highlights

## Environment

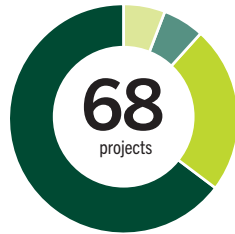
See page 080 for more information.

### Project finance for overseas renewable energy projects

Annual CO<sub>2</sub> reduction

**17,643** thousand t-CO<sub>2</sub>

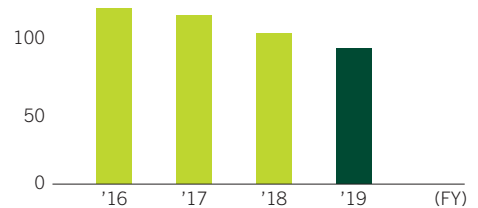
Hydropower Biomass Solar power Wind power



### Total CO<sub>2</sub> Emissions (per m<sup>2</sup>)

**97** thousand t-CO<sub>2</sub> per thousand m<sup>2</sup>

(t-CO<sub>2</sub>)  
150  
100  
50  
0



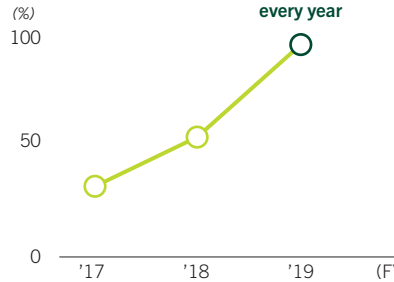
Note: The figure for FY2019 is a preliminary figure.

## Social

See page 082, 095 for more information.

### Rate of employees taking parental leave (male)

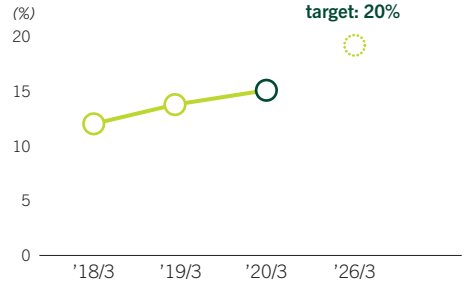
**100** %



Note: Figures are for SMBC.

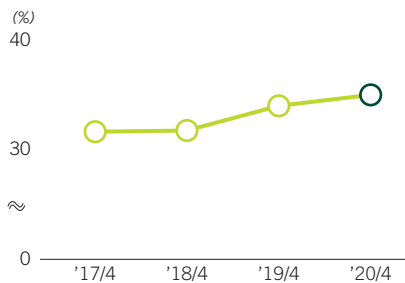
### Ratio of female managers

**15.3** %



### Ratio of GM positions with locally hired employees

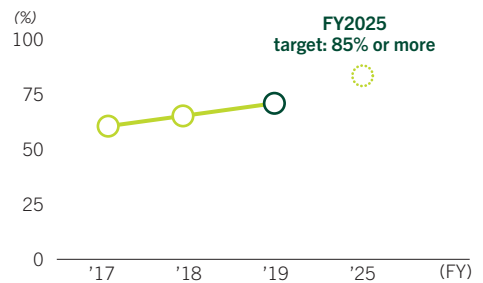
**35** %



Note: Figures are for SMBC and overseas bases of major affiliates.

### Paid leave acquisition rate

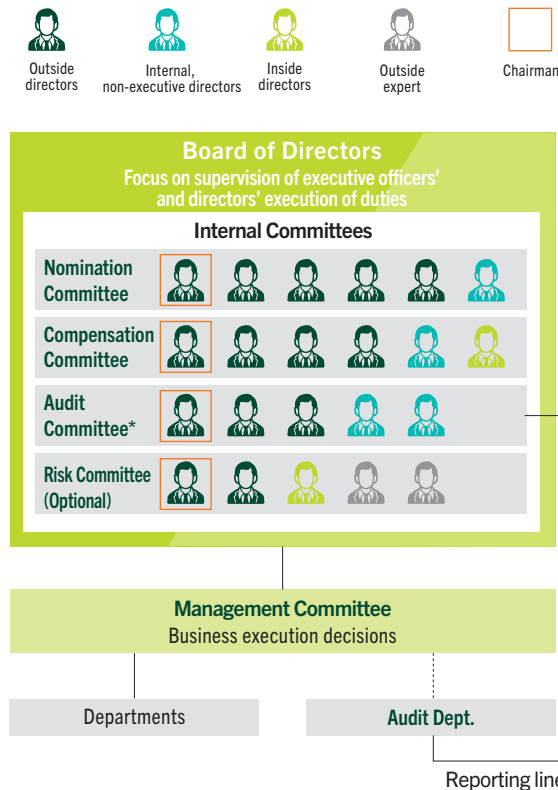
**74.7** %



# Governance

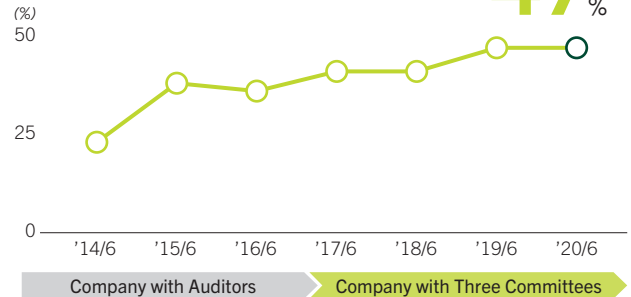
See page 064 for more information.

## Corporate Governance System

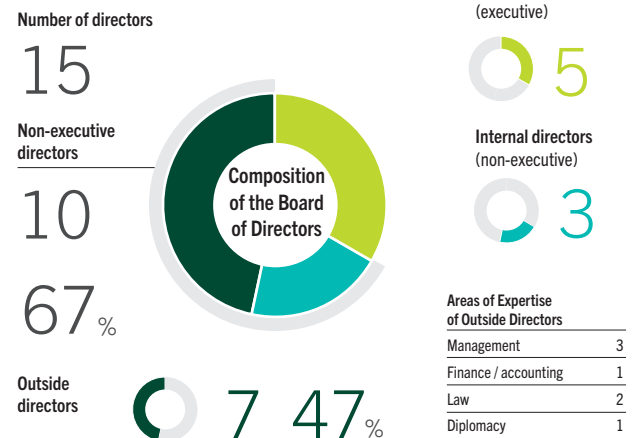


\* The Audit Committee holds the right to consent personal affairs of Chief Audit Executive.

## Ratio of Outside Directors



## Composition of the Board of Directors



## ESG Indices on which Sumitomo Mitsui Financial Group is listed

SMBC Group has been included in the following major global ESG indices (as of June 30, 2020).