

**Contents**

---

Directors, Executive Officers and Auditors	<b>110</b>
Organization	<b>112</b>
Subsidiaries, Affiliates and Associates	<b>113</b>
Directory	<b>116</b>
Information for Investors	<b>121</b>

---

## Directors, Executive Officers and Auditors

(As of June 29, 1999)



Chairman  
**Masahiro Takasaki**



President  
**Akishige Okada**



Deputy President  
**Yasuhiro Uehara**



Deputy President  
**Tadayoshi Nishimura**



Senior Managing Director  
**Kouichi Nishina**



Senior Managing Director  
**Eiichi Takizawa**

\*The following 13 directors are also executive officers.

<b>Chairman</b>	<b>Masahiro Takasaki</b>	
<b>President</b>	<b>Akishige Okada</b>	
<b>Deputy Presidents</b>	<b>Yasuhiro Uehara</b>	Head of Institutions Division, Kansai Institutions Division, Financial Institutions Division, Kansai Project Development Division, Corporate Banking Group, International Banking Group
	<b>Tadayoshi Nishimura</b>	Head of Secretariat, Corporate Treasury Division, Personnel Division, Subsidiaries and Affiliates Division
<b>Senior Managing Directors</b>	<b>Kouichi Nishina</b>	Head of Credit Supervision Division, Credit Supervision Division I and II, International Credit Supervision Division
	<b>Eiichi Takizawa</b>	General Manager of Head Office and Tokyo Main Office; Head of Head Office and Tokyo Main Office
<b>Managing Directors</b>	<b>Tsutomu Sakuma</b>	Head of General Affairs Division, Kansai General Affairs Division, Inspection Division, Asset Review and Inspection Division, Legal Division
	<b>Hirokazu Ishikawa</b>	Head of Planning Division, Public Relations Division, Research Division
	<b>Tsuyoshi Kuriyama</b>	Investment Banking Division Company President
	<b>Hidemitsu Nakao</b>	Head of Middle Market and Consumer Banking Group
	<b>Yoshihiro Takizawa</b>	Head of Information Technology Planning Division, Systems and Operations Planning Division, Systems Development Division, Electronic Network Business Division
	<b>Hidenori Hiramatsu</b>	Head of Kansai Credit Supervision Division; Deputy Head of Credit Supervision Division
	<b>Hideharu Kadowaki</b>	Head of Corporate Risk Management Division, Credit Planning Division; Deputy Head of Credit Supervision Division, Credit Supervision Division I and II, International Credit Supervision Division

**Standing Auditors**

**Masaharu Kamoshita**  
**Takehisa Hiraiwa**  
**Taro Sumitani**  
**Toyokazu Sato**

**Auditors**

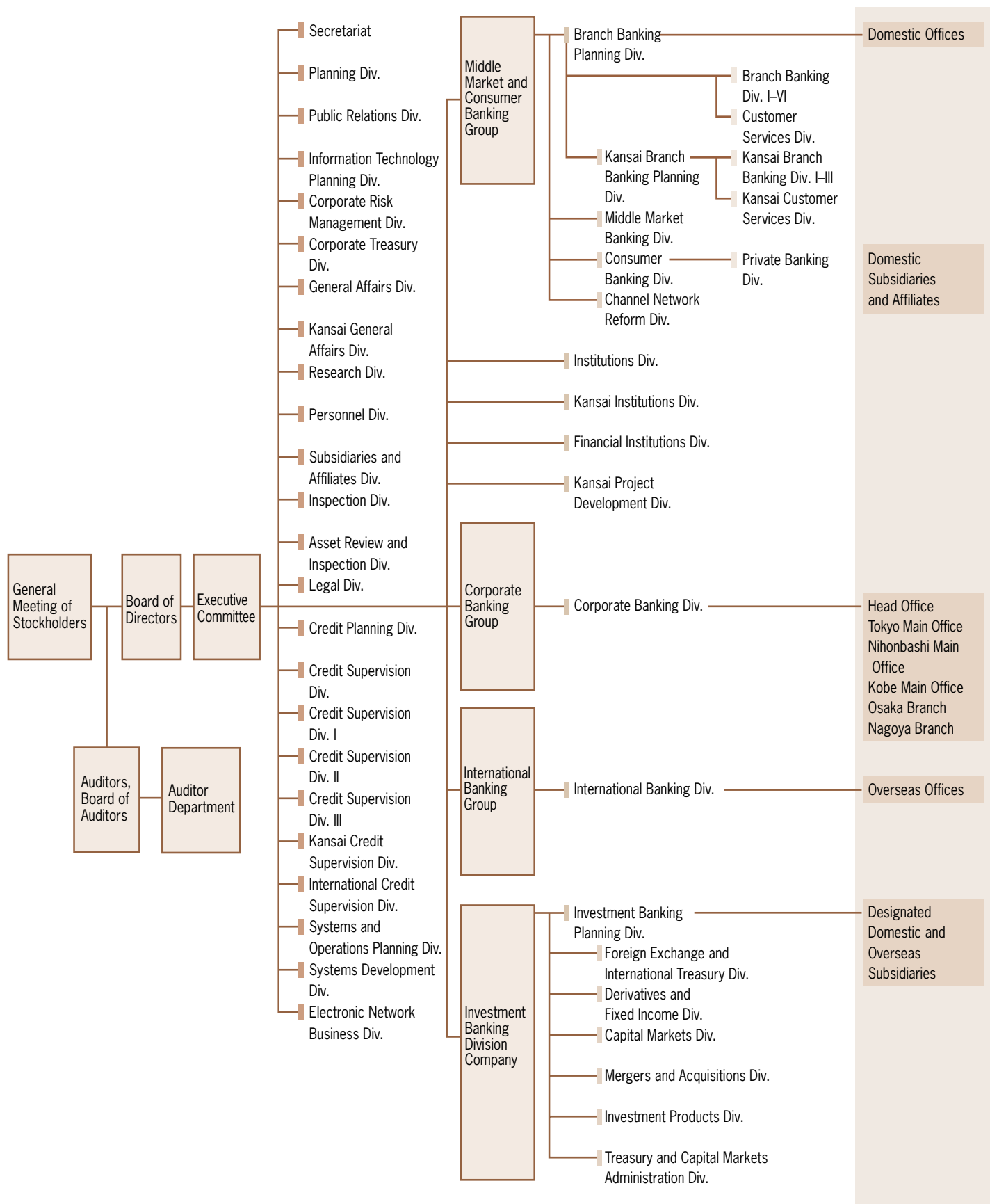
**Gaishi Hiraiwa**  
**Yasutaka Okamura**

---

<b>First Senior Executive Officer</b>	<b>Mitsuhiro Masumi</b>	Head of Credit Supervision Division III
<b>Senior Executive Officers</b>	<b>Toshiro Ishii</b>	Head of Head Office and Tokyo Main Office
	<b>Keizo Ogawa</b>	General Manager of Osaka Branch; Deputy Head of Kansai Credit Supervision Division
	<b>Takemasa Tsukamoto</b>	General Manager of Systems Development Division
<b>Executive Officers</b>	<b>Masahiro Oba</b>	General Manager of Systems and Operations Planning Division
	<b>Nobuo Iijima</b>	General Manager of Middle Market Banking Division
	<b>Nobuhiro Yabumoto</b>	Deputy Head of Middle Market and Consumer Banking Group
	<b>Kakuei Miyagi</b>	General Manager of Tokyo Chuo Branch
	<b>Toshikatsu Sano</b>	General Manager of Nagoya Branch
	<b>Takashi Fujishima</b>	Head of Investor Relations Department, Planning Division; Deputy Head of International Banking Group
	<b>Taisuke Ota</b>	General Manager of Nihonbashi Main Office
	<b>Teisuke Kitayama</b>	General Manager of Planning Division
	<b>Ryoji Miura</b>	General Manager of Tokyo Main Office Division II
	<b>Kouichi Yanagimura</b>	General Manager of Personnel Division
	<b>Toichiro Mizushima</b>	General Manager of Branch Banking Planning Division
	<b>Shigetada Takahashi</b>	General Manager of Credit Planning Division
	<b>Akira Sato</b>	General Manager of Corporate Treasury Division
	<b>Hiroshi Kii</b>	General Manager of Kobe Main Office
	<b>Shuichi Fujimori</b>	Investment Banking Division Company Executive Vice President
	<b>Morio Kusunoki</b>	Deputy Head of Kansai General Affairs Division, Kansai Institutions Division, Financial Institutions Division; Kansai Project Development Division, Middle Market and Consumer Banking Group (Kansai)
	<b>Jumpei Ishii</b>	General Manager of London Branch
	<b>Takao Umino</b>	Regional Manager for the Americas; General Manager of New York and Cayman Branches
	<b>Masayuki Yamazaki</b>	General Manager of Akasaka Business Office and Akasaka Business Office Division I
	<b>Mitsuaki Yahagi</b>	General Manager of Investment Banking Planning Division, Investment Banking Division Company
	<b>Hitoshi Yoshimatsu</b>	General Representative in Thailand; General Manager of Bangkok Branch
	<b>Hideaki Shigi</b>	General Manager of Himeji Branch

# Organization

(As of July 1, 1999)



## Subsidiaries, Affiliates and Associates

(As of July 1, 1999)

### JAPAN

#### Subsidiaries

Company Name	Main Business	Established	Issued Capital (Millions)	Equity Held by Bank	Equity Held by Subsidiaries and Affiliates
Sakura Securities Co., Ltd.	Securities business	Oct. 1994	¥25,000	100%	—%
The Sakura Trust & Banking Co., Ltd.	Trust and banking business	Dec. 1995	10,000	100	—
Sakura Center Service Co., Ltd.	Banking clerical work	Oct. 1995	50	100	—
Sakura Business Service Co., Ltd.	Banking clerical work	Sept. 1976	10	100	—
Sakura Staff Service Co., Ltd.	Temporary manpower service	Nov. 1972	30	100	—
Sakura Office Service Co., Ltd.	Temporary manpower service	Jan. 1985	30	100	—
Sakura International Operations Co., Ltd.	Banking clerical work	Dec. 1994	10	100	—
Sakura Loan Adviser Co., Ltd.	Consulting and agency services for consumer loans	Apr. 1998	10	100	—
Sakura Human Resources Development Center Co., Ltd.	Business training	May 1998	10	100	—
Sakura Total Maintenance Co., Ltd.	Disposal of real estate collateral	Oct. 1994	300	100	—
Sakura Servicing Co., Ltd.	Servicer	Mar. 1999	500	100	—
Sakura Shingu Agent Co., Ltd.	Agency	Mar. 1986	10	100	—
The Wakashio Bank, Ltd.	Commercial banking	June 1996	40,000	100	—
Wakashio Total Maintenance Co., Ltd.	Disposal of real estate collateral	Nov. 1994	100	100	—
Wakashio Business Service Co., Ltd.	Banking clerical work agent	Apr. 1997	10	100	—
Sakura Guarantee Co., Ltd.	Credit guarantee operations	July 1976	220	31.5	63.1
Sakura Finance Service Co., Ltd.	Loans, collecting agent, factoring	July 1979	200	25.9	28.1
Mitsui Finance Service Co., Ltd.	Loans, collecting agent, factoring	Dec. 1979	1,100	39.6	35.0
Sakura Card Co., Ltd.	Credit card services	Feb. 1983	4,938	79.5	19.8
Sakura Mortgage Co., Ltd.	Mortgage loans, mortgage certificate operations	Oct. 1983	1,150	46.2	28.3
Sakura K.C.S. Corporation	Computations, data processing	Mar. 1969	1,620	20.1	35.4
Sakura Information Systems Co., Ltd.	Computations, data processing	Nov. 1972	600	25.2	64.5
Sakura Leasing Co., Ltd.	Loans, leasing	Mar. 1988	208	44.4	55.6
S.G. Kanri Co., Ltd.	Rental properties management	Jan. 1998	12	100	—
<b>Main Affiliates and Associates</b>					
Sakura Investment Management Co., Ltd.	Investment advisory, investment trust management	Sept. 1993	1,280	17.6	8.2
Sakura Institute of Research Inc.	Research, consulting	May 1981	1,000	67.5	32.5
Sakura Capital Co., Ltd.	Venture capital investment and related services	Mar. 1992	500	100	—

## THE AMERICAS

### Subsidiaries

Company Name	Country	Main Business	Established	Issued Capital (Millions)	Equity Held by Bank	Equity Held by Subsidiaries and Affiliates
Manufacturers Bank	U.S.A.	Commercial banking	June 1962	US\$80.8	100%	—%
Sakura Business Finance, Inc.	U.S.A.	Lease, financing	Nov. 1997	US\$0.00001	100	—
Sakura Global Capital, Inc.	U.S.A.	Swaps, options market making	Dec. 1990	US\$0.00010	100	—
Sakura Trust Company	U.S.A.	Trustee business, investment management	Oct. 1988	US\$5	100	—
SDI Capital Markets, Inc.	U.S.A.	Securities	Nov. 1988	US\$0.5	100	—
Sakura Dellsher, Inc.	U.S.A.	Futures commission merchant	May 1970	US\$12.4	60	—
Sakura Bank (Canada)	Canada	Commercial banking	Apr. 1990	C\$70.3	100	—
Sakura Capital Funding (Cayman) Limited	Cayman Islands	Medium- and long-term finance	July 1992	US\$0.1	100	—
Sakura Finance (Cayman) Limited	Cayman Islands	Medium- and long-term finance	Feb. 1991	US\$0.1	100	—
Sakura Preferred Capital (Cayman), Limited	Cayman Islands	Medium- and long-term finance	Nov. 1998	¥10	100	—

### Main Associates

CB Bancshares, Inc. (City Bank)	U.S.A.	Commercial banking	Jan. 1959	US\$3.6	4.9	—
Banco Bozano, Simonsen S.A.	Brazil	Banking	Nov. 1963	R\$248	0.25	—
CIA Bozano, Simonsen	Brazil	Holding company	Dec. 1961	R\$516	0.27	—

## EUROPE AND MIDDLE EAST

### Subsidiaries

Company Name	Country	Main Business	Established	Issued Capital (Millions)	Equity Held by Bank	Equity Held by Subsidiaries and Affiliates
Sakura Finance International Limited	United Kingdom	Securities, finance	Sept. 1973	£100	100%	—%
Sakura Trust International Limited	United Kingdom	Trustee business, fiscal agency business	May 1984	£0.25	100	—
Sakura Global Capital Limited	United Kingdom	Finance	Apr. 1991	US\$36.5	100	—
Sakura Finanz (Deutschland) GmbH	Germany	Leasing	June 1985	DM0.05	100	—
Sakura Bank (Luxembourg) S.A.	Luxembourg	Banking, securities	Nov. 1978	US\$24.6	100	—
Sakura Bank (Schweiz) AG	Switzerland	Securities, banking	Dec. 1982	SFr65	100	—
Turk Sakura Bank A.S.	Turkey	Banking, securities	Aug. 1985	Lt124,500	96.5	—

## ASIA AND OCEANIA

### Subsidiaries

Company Name	Country	Main Business	Established	Issued Capital (Millions)	Equity Held by Bank	Equity Held by Subsidiaries and Affiliates
Sakura Finance Australia Limited	Australia	Commercial banking	Mar. 1986	A\$54	100%	—%
Sakura Finance Asia Limited	Hong Kong	Finance	Oct. 1977	US\$65.5	100	—
Sakura Bank Hong Kong Trustee Limited	Hong Kong	Trustee business	July 1990	HK\$3	100	—
Sakura Finance Hong Kong Limited	Hong Kong	Finance	July 1990	US\$4	100	—
Sakura Global Capital Asia Ltd.	Hong Kong	Finance	Apr. 1994	HK\$35	100	—
Sakura Dellsher (Hong Kong) Limited	Hong Kong	Operations in financial futures markets	June 1997	HK\$0.01	100	—
P.T. Bank Sakura Swadharma	Indonesia	Commercial banking	Nov. 1989	Rp50,000	85	—
Sakura Financial Futures (Singapore) Pte. Limited	Singapore	Operations in financial futures markets	Aug. 1985	S\$0.6	100	—
Sakura Merchant Bank (Singapore) Limited	Singapore	Merchant banking	Apr. 1990	S\$4	100	—
Sakura Capital India, Limited	India	Leasing	Oct. 1995	Rs230	75	—

### Main Affiliates

China United International Leasing Co., Ltd.	China	Leasing	Sept. 1985	US\$5	25	—
P.T. Perjahl Leasing Indonesia	Indonesia	Leasing	Aug. 1975	Rp25,001	25	—
Far East Bank and Trust Company	Philippines	Banking, securities, trust business	Apr. 1960	P5.400	24.7	—
Bangkok Sakura Leasing Co., Limited	Thailand	Leasing	July 1987	B60	35	5
Bangkok Sakura Software Service Co., Limited	Thailand	Software services	Jan. 1991	B20	44	2
SBCS Co., Limited	Thailand	Consulting	Mar. 1989	B5	60	40
Sakura Management Services Co., Limited	Thailand	Consulting	Nov 1996	B1	65	35
Thai Sakura Finance and Securities Co., Limited	Thailand	Finance, securities	Jan. 1972	B150	38.8	—

### Main Associates

Hua Tong International Leasing Co., Ltd.	China	Leasing	Nov. 1988	US\$5	10	—
RHB Capital Berhad	Malaysia	Holding company	Aug. 1994	M\$1,767	5.3	—
Bangkok Bank Public Company, Limited	Thailand	Banking	Dec. 1944	B14,665	1.95	—

# Directory

(As of July 1, 1999)

## International Banking

*Deputy President:*  
Yasuhiro Uehara

*Executive Officer:*  
Takashi Fujishima

---

## ASIA AND OCEANIA

### BRANCHES AND REPRESENTATIVE OFFICES

#### Guangzhou Branch

7th Floor, Main Building,  
Guangdong International Hotel,  
339 Huanshi Dong Lu, Guangzhou,  
Guangdong, People's Republic of China  
Tel: 86 (20) 8331-1111  
Telex: 440916 MTKGZ CN  
Fax: 86 (20) 8331-1932

*General Manager:*  
Yuji Tsujino

#### Shanghai Branch

41st Floor,  
Shanghai Senmao International Building,  
101 Yin Cheng East Road,  
Pudong New Area, Shanghai 200120,  
People's Republic of China  
Tel: 86 (21) 6841-3111  
Telex: 33540 MITKBKSH CN  
Fax: 86 (21) 6841-0650, 6841-4113

*General Manager:*  
Hiroshi Shigeta

#### Tianjin Branch

Room No. 1210, Tianjin International  
Building, No. 75 Nan Jing Lu, Tianjin,  
People's Republic of China  
Tel: 86 (22) 2330-3334  
Telex: 23248 MTK TJ CN  
Fax: 86 (22) 2331-3834

*General Manager:*  
Kenji Kato

#### General Representative Office in China

3rd Floor, Changfugong Office Building,  
A-26, Jianguomenwai Dajie, Chaoyang-Qu,  
Beijing, People's Republic of China  
Tel: 86 (10) 6513-9018, 6513-9253  
Telex: 22676 MTKBJ CN  
Fax: 86 (10) 6513-9019

*General Representative in China and  
Chief Representative:*  
Tsuneo Kondo

#### Dalian Representative Office

17th Floor, Senmao Building,  
147 Zhongshan Road, Dalian,  
People's Republic of China  
Tel: 86 (411) 360-6161  
Telex: 86341 MTKDL CN  
Fax: 86 (411) 360-7171

*Chief Representative:*  
Takashi Hirata

#### Taipei Representative Office

4th Floor-D, Hung-tai Center, No. 170,  
Tun-hwa North Road, Taipei, Taiwan  
Tel: 886-2-2545-6728  
Fax: 886-2-2545-6461

*Chief Representative:*  
Haito Kokubun

#### Hong Kong Branch

Level 24, One Pacific Place,  
88 Queensway, Central, Hong Kong  
People's Republic of China  
Tel: 852-2825-0800, 2825-0700  
Telex: 62432, 75106 MTKBK HX  
Fax: 852-2840-0535

*General Manager:*  
Nario Mizuno

#### Mumbai Branch

2-B, Mittal Court 224, Nariman Point,  
Mumbai 400021, India  
Tel: 91 (22) 204-3931  
Telex: (011) 82987  
Fax: 91 (22) 204-6754

*General Manager:*  
Akira Furuta

#### New Delhi Branch

Dr. Gopal Das Bhawan, Ground Floor,  
28 Barakhamba Road,  
New Delhi 110001, India  
Tel: 91 (11) 373-7637~41  
Telex: (31) 65527 MITK  
Fax: 91 (11) 373-7642

*General Manager:*  
Kazuo Hashimoto

#### Seoul Branch

7th Floor, Young Poong Building,  
33, Sorin-Dong, Chongro-ku,  
Seoul, Republic of Korea  
Tel: 82 (2) 399-6311  
Telex: 26303 MITKBK  
Fax: 82 (2) 399-6322

*General Manager:*  
Satoshi Murayama

#### Labuan Branch

Level 15 A (1), Main Office Tower,  
Financial Park Labuan, Jalan Merdeka,  
87000 Labuan, F.T., Malaysia  
Tel: 60 (87) 419451  
Telex: MA85022 MITKBK  
Fax: 60 (87) 419455

*General Manager:*  
Motohiko Asanuma

#### Kuala Lumpur Marketing Office

Letter Box No. 25,  
29th Floor, UBN Tower,  
10, Jalan P. Ramlee,  
50250 Kuala Lumpur, Malaysia  
Tel: 60 (3) 206-8392  
Telex: MA30989 MITKBK  
Fax: 60 (3) 206-8395

*General Manager:*  
Motohiko Asanuma

#### Kuala Lumpur Representative Office

Letter Box No. 25,  
29th Floor, UBN Tower,  
10, Jalan P. Ramlee,  
50250 Kuala Lumpur, Malaysia  
Tel: 60 (3) 206-8544  
Telex: MA30989 MITKBK  
Fax: 60 (3) 206-8303

*General Representative in Malaysia and  
Chief Representative:*  
Akira Miyama



**Singapore Branch**

16, Raffles Quay No. 01-04,  
Hong Leong Building,  
Singapore 048581,  
Republic of Singapore  
Tel: 65-2209761  
Telex: RS21319 MITKBK  
Fax: 65-2250962

*General Manager:*  
Toyohisa Kato

**Bangkok Branch**

Boon-Mitr Building, 138 Silom Road,  
Bangkok 10500, Thailand  
Tel: 66 (2) 234-3841~8  
Telex: TH82828  
Fax: 66 (2) 236-8920

*Executive Officer, General Representative  
in Thailand and General Manager:*  
Hitoshi Yoshimatsu

**Ayudhya Branch**

3rd Floor, Bank of Asia Building,  
5-255, Pailing, Ayudhya District,  
Ayudhya Province, Thailand  
Tel: 66 (35) 245842  
Fax: 66 (35) 241546

*General Manager:*  
Tadatoshi Ota

**Chonburi Branch**

6th Floor, Bangkok Bank Building,  
98, Sukhumvit Road, Sriracha District,  
Chonburi Province, Thailand  
Tel: 66 (38) 770584~7  
Fax: 66 (38) 770588

*General Manager:*  
Tadatoshi Ota

**Manila Representative Office**

Far East Bank Center,  
Senator Gil Puyat Avenue,  
Makati, Metro Manila, Philippines  
Tel: 63 (2) 891-4051  
Fax: 63 (2) 891-4052

*Chief Representative:*  
Mitsuho Karakida

**Yangon Representative Office**

112, 49th Street,  
Pazundaung Township,  
Yangon, Myanmar

## SUBSIDIARIES

**Sakura Finance Australia Limited**

10th Floor, AMP Centre, 50 Bridge Street,  
Sydney, N.S.W. 2000, Australia  
Tel: 61 (2) 9221-5000  
Telex: 73033 MTKA  
Fax: 61 (2) 9231-2151

*Managing Director:*  
Hachiro Sato

**Sakura Finance Asia Limited**

Level 24, One Pacific Place,  
88 Queensway, Central, Hong Kong,  
People's Republic of China  
Tel: 852-2864-9300  
Telex: 65119, 83413 MTKAL HX  
Fax: 852-2861-2316

*Managing Director:*  
Tadashi Sasaki

**Sakura Bank Hong Kong Trustee Limited**

Level 24, One Pacific Place,  
88 Queensway, Central, Hong Kong,  
People's Republic of China  
Tel: 852-2864-9300  
Telex: 65119, 83413 MTKAL HX  
Fax: 852-2861-2316

*Managing Director:*  
Tadashi Sasaki

**Sakura Capital India Limited**

21 Mittal Chambers, 228 Nariman Point,  
Mumbai 400021, India  
Tel: 91 (22) 288-4361  
Fax: 91 (22) 288-4367

*Chairman:*  
C.H. Mirani

*Managing Director:*  
Toshiaki Kobayashi

**P.T. Bank Sakura Swadharma**

19th Floor, BNI Building, Jl. Jendral  
Sudirman Kav. 1, Jakarta 10001,  
Indonesia  
Tel: 62 (21) 570-1401  
Telex: 65179 SAKURA IA  
Fax: 62 (21) 570-1398

*President:*  
Yoshio Uchino

**Sakura Financial Futures (Singapore) Pte. Limited**

16, Raffles Quay No. 35-01,  
Hong Leong Building, Singapore 048581,  
Republic of Singapore  
Tel: 65-3217250  
Telex: RS21319 MITKBK  
Fax: 65-2250962

*Managing Director:*  
Toyohisa Kato

**Sakura Merchant Bank (Singapore) Limited**

16, Raffles Quay #02-06,  
Hong Leong Building, Singapore 048581,  
Republic of Singapore  
Tel: 65-2253787  
Telex: RS42916 MITKBK  
Fax: 65-2247372

*Managing Director:*  
Toyohisa Kato

## AFFILIATES AND ASSOCIATES

**China United International Leasing Co., Ltd.**

Room 3303, Office Tower,  
CITIC Plaza, 233 Tianhe North Road,  
Guangzhou, People's Republic of China  
Tel: 86 (20) 87520177  
Telex: 44587 CUILC CN  
Fax: 86 (20) 87520397

**Hua Tong International Leasing Co., Ltd.**

6th Floor, You Yuan Hotel,  
18 Taishan Road,  
Shenyang, People's Republic of China  
Tel: 86 (24) 86809630  
Telex: 804068 HTILC CN  
Fax: 86 (24) 86809324

**P.T. Perjahl Leasing Indonesia**

Mid Plaza Building LT 9, Jl. Jendral Sudirman Kav. 10-11, Jakarta 10220, Indonesia  
 Tel: 62 (21) 570-6221, 570-6225  
 Telex: 65397 PERLI IA  
 Fax: 62 (21) 570-6199

**RHB Capital Berhad**

Level 8, Tower 3, RHB Center, Jalan Tun Razak, 50400, Kuala Lumpur, Malaysia  
 Tel: 60 (3) 987-8888  
 Telex: MA33155, MA33153  
 Fax: 60 (3) 987-9000

**RHB Bank Berhad****(Association of RHB Capital Berhad)**

Level 8, Tower 3, RHB Center, Jalan Tun Razak, 50400, Kuala Lumpur, Malaysia  
 Tel: 60 (3) 987-4255  
 Telex: MA33155  
 Fax: 60 (3) 987-4258

**RHB Sakura Merchant Bankers Berhad****(Association of RHB Capital Berhad)**

Level 13, Tower 3, RHB Center, Jalan Tun Razak, 50400, Kuala Lumpur, Malaysia  
 Tel: 60 (3) 981-5888  
 Telex: MA30913  
 Fax: 60 (3) 987-3399

**Far East Bank and Trust Company**

Far East Bank Center, Senator Gil Puyat Avenue, Makati, Metro Manila, Philippines  
 Tel: 63 (2) 891-5429  
 Fax: 63 (2) 891-4052

**Bangkok Sakura Leasing Co., Limited**

19th Floor, Sathorn City Tower, 175 South Sathorn Road, Sathorn, Bangkok 10120, Thailand  
 Tel: 66 (2) 679-6144  
 Fax: 66 (2) 679-6160

**Bangkok Sakura Software Service Co., Limited**

19th Floor, Q-House, Sathorn Building, No. 11 South Sathorn Road, Sathorn, Bangkok 10120, Thailand  
 Tel: 66 (2) 679-1878~80  
 Fax: 66 (2) 679-1882

**SBCS Co., Limited**

3rd Floor, Boon-Mitr Building, 138 Silom Road, Bangkok 10500, Thailand  
 Tel: 66 (2) 237-6295~8  
 Fax: 66 (2) 237-6299

**Sakura Management Services Co., Limited**

3rd Floor, Boon-Mitr Building, 138 Silom Road, Bangkok 10500, Thailand  
 Tel: 66 (2) 237-6295~8

**Thai Sakura Finance and Securities Co., Limited**

12th Floor, Ramaland Building 952, Rama IV Road, Bangrak, Bangkok 10500, Thailand  
 Tel: 66 (2) 632-9700  
 Telex: 87296 MITHAI TH  
 Fax: 66 (2) 632-9711

---

**THE AMERICAS**

BRANCHES, AGENCIES AND REPRESENTATIVE OFFICES

**New York Branch**

101 Park Avenue, 12-17th Floor, New York, NY 10178, U.S.A.  
 Tel: 1 (212) 909-4600  
 Telex: 232962, 222892 MITKBK NY, 421242 MITKBK NY  
 Fax: 1 (212) 644-9565, 888-7651

*Executive Officer, the Regional Manager for the Americas and General Manager:*  
 Takao Umino

**Chicago Branch**

227 West Monroe Street, Suite 4700, Chicago, IL 60606, U.S.A.  
 Tel: 1 (312) 782-3144, 663-8181  
 Telex: 254048 MITKBK ACGO, 282159 MITKBK BCGO  
 Fax: 1 (312) 332-5345, 663-8199

*General Manager:*  
 Yoshinori Takahashi

**Los Angeles Agency**

515 South Figueroa Street, Los Angeles, CA 90071, U.S.A.  
 Tel: 1 (213) 680-2900  
 Telex: 677185, 188489, 4720063 MITKBK  
 Fax: 1 (213) 622-9359

*General Manager:*  
 Hidekazu Akimoto

**Cayman Branch**

CIBC Building, Edward Street, George Town, Grand Cayman, Cayman Islands

*Executive Officer and General Manager:*  
 Takao Umino

**São Paulo Representative Office**

Avenida Paulista, 1274-12<sup>o</sup>-Andar, Conjunto N<sup>o</sup>31, Bela Vista, São Paulo S.P., Brazil CEP 01310  
 Tel: 55 (11) 283-0844  
 Telex: 011-22864 MITK BR  
 Fax: 55 (11) 251-0054, 251-3811

*Chief Representative:*  
 Tatsuo Usami

**SUBSIDIARIES****Manufacturers Bank**

*Corporate Headquarters*  
 515 South Figueroa Street, Los Angeles, CA 90071, U.S.A.  
 Tel: 1 (213) 489-6200  
 Telex: WU TRT 188222 MITMANBK LSA  
 Fax: 1 (213) 489-6254

*Chairman, President, and Chief Executive Officer:*  
 Hidekazu Akimoto

**Headquarters Office**

515 South Figueroa Street, Los Angeles, CA 90071, U.S.A.  
 Tel: 1 (213) 489-6200  
 Telex: WU TRT 188222 MITMANBK LSA  
 Fax: 1 (213) 489-6254

**Beverly Hills Office**

9701 Wilshire Boulevard, Beverly Hills, CA 90212, U.S.A.  
 Tel: 1 (310) 786-8000  
 Fax: 1 (310) 786-8031

*City of Industry Office*

18645 E. Gale Ave., #233,  
City of Industry, CA 91748, U.S.A.  
Tel: 1 (626) 839-0335  
Fax: 1 (626) 839-5834

*Encino Office*

16255 Ventura Boulevard,  
Encino, CA 91436, U.S.A.  
Tel: 1 (818) 380-0900  
Fax: 1 (818) 380-0968

*Little Tokyo Office*

200 South San Pedro Street,  
Los Angeles, CA 90012, U.S.A.  
Tel: 1 (213) 489-6400  
Fax: 1 (213) 489-6471

*Newport Beach Office*

1 Newport Place,  
Newport Beach, CA 92660, U.S.A.  
Tel: 1 (949) 253-5600  
Fax: 1 (949) 253-5603

*Ninth and Los Angeles Office*

135 East 9th Street,  
Los Angeles, CA 90015, U.S.A.  
Tel: 1 (213) 489-8500  
Fax: 1 (213) 489-6259

*San Diego Office*

701 "B" Street, Suite 100,  
San Diego, CA 92101, U.S.A.  
Tel: 1 (619) 544-3000  
Fax: 1 (619) 544-3018

*San Francisco Office*

345 California Street, Suite 1100,  
San Francisco, CA 94104, U.S.A.  
Tel: 1 (415) 765-0800  
Telex: WU 34331  
Fax: 1 (415) 765-0809

*San Jose Office*

10 Almaden Boulevard,  
San Jose, CA 95113, U.S.A.  
Tel: 1 (408) 975-3800  
Fax: 1 (408) 975-3842

*Warner Center Office*

21550 Oxnard Street,  
Woodland Hills, CA 91367, U.S.A.  
Tel: 1 (818) 227-4500  
Fax: 1 (818) 227-4581

**Sakura Business Finance, Inc.**

101 Park Ave., 12–17th Floor,  
New York, NY 10178, U.S.A.  
Tel: 1 (212) 909-4880  
Fax: 1 (212) 909-4899

*President:*

Mario Morrone

**Sakura Global Capital, Inc.**

65 East 55th Street,  
Park Avenue Tower,  
New York, NY 10022, U.S.A.  
Tel: 1 (212) 486-8282  
Telex: 6790884 SGCNY  
Fax: 1 (212) 355-4271

*President, and Chief Executive Officer:*

Takashi Ueno

**Sakura Trust Company**

101 Park Avenue, 12–17th Floor,  
New York, NY 10178, U.S.A.  
Tel: 1 (212) 909-7500  
Telex: 0255945 STC UR  
Fax: 1 (212) 909-7550

*President:*

Hajime Tada

**Sakura Dellsler, Inc.**

*Head Office*

10 South Wacker Drive, 32nd Floor,  
Chicago, IL 60606, U.S.A.  
Tel: 1 (312) 930-0001  
Fax: 1 (312) 930-4513

*Chairman and Chief Executive Officer:*

Leo Melamed

*President:*

Hideki Miyamoto

*New York Office*

411 West Putnam Avenue,  
Suite 320, Greenwich,  
Connecticut 06830-6214, U.S.A.  
Tel: 1 (203) 862-0900  
Fax: 1 (203) 862-0936

*San Antonio Office*

8200 IH 10 West,  
Suite 209, San Antonio,  
Texas 78230, U.S.A.  
Tel: 1 (210) 341-3250  
Fax: 1 (210) 341-5092

**Sakura Bank (Canada)**

Commerce Court West,  
Suite 3601, P.O. Box 59,  
Toronto, Ontario M5L 1B9, Canada  
Tel: 1 (416) 369-8531  
Telex: 623400 MITKBK TOR  
Fax: 1 (416) 369-0268

*President and Chief Executive Officer:*

Masaji Hosoda

**Sakura Capital Funding (Cayman) Limited**

Maples and Calder, P.O. Box 309,  
Ugland House, South Church Street,  
Grand Cayman, Cayman Islands,  
British West Indies

*Executive Officer:*

Teisuke Kitayama

**Sakura Finance (Cayman) Limited**

Maples and Calder, P.O. Box 309,  
Ugland House, South Church Street,  
Grand Cayman, Cayman Islands,  
British West Indies

*Executive Officer:*

Teisuke Kitayama

**Sakura Preferred Capital (Cayman) Limited**

Maples and Calder, P.O. Box 309,  
Ugland House, South Church Street,  
Grand Cayman, Cayman Islands,  
British West Indies

*Executive Officer:*

Teisuke Kitayama

AFFILIATES AND ASSOCIATES

**CB Bancshares, Inc. (City Bank)**

201 Merchant Street,  
Honolulu, HI 96813, U.S.A.  
Tel: 1 (808) 535-2836, 2833  
Fax: 1 (808) 523-7458

**Banco Bozano, Simonsen S.A.**

Avenida Rio Branco, 138 Rio de Janeiro,  
CEP 20057-900, RJ. Brazil  
Tel: 55 (21) 508-4000  
Telex: 21-22963 BOZS BR  
Fax: 55 (21) 508-4053

**CIA Bozano, Simonsen**

Avenida Rio Branco, 138 Rio de Janeiro,  
CEP 20057-900, RJ. Brazil  
Tel: 55 (21) 508-4000  
Telex: 21-22963 BOZS BR  
Fax: 55 (21) 508-4627

---

**EUROPE, MIDDLE EAST AND AFRICA****BRANCHES AND  
REPRESENTATIVE OFFICES****London Branch**

Ground and 1st Floors, 6 Broadgate,  
London EC2M 2RQ, United Kingdom  
Tel: 44 (207) 638-3131  
Telex: 888519, 888757,  
888902 MITKBK G  
Fax: 44 (207) 638-1260

*Executive Officer and General Manager:*  
Junpei Ishii

**Brussels Branch**

Avenue Louise 287,  
1050 Brussels, Belgium  
Tel: 32 (2) 643-3011  
Telex: 25980, 22461 MITKBK B  
Fax: 32 (2) 644-9006

*General Manager:*  
Takashi Okimoto

**Düsseldorf Branch**

Königsallee 15, 40212 Düsseldorf,  
F.R. Germany  
Tel: 49 (211) 88940  
Telex: 8588101, 8588575 MTKD D  
Fax: 49 (211) 328166

*General Manager:*  
Yoshiharu Nakamura

**Representative Office for  
the Middle East, Bahrain**

P.O. Box 26859, 3rd Floor, Part II,  
Manama Center, Government Road,  
Manama, State of Bahrain  
Tel: 973-224805  
Telex: 9427 MTKBK BN  
Fax: 973-224784

*Chief Representative:*  
Yasuhiro Kanehira

**Tashkent Representative Office**

3rd Floor, International Banking and  
Finance Centre 1, T. Tula Street,  
700003, Tashkent, Uzbekistan  
Tel: 9-98-71-2456505  
Fax: 9-98-71-1206060

*Chief Representative:*  
Yasushi Koike

**SUBSIDIARIES****Sakura Finance International Limited**

Ground and 1st Floors, 6 Broadgate,  
London EC2M 2RQ, United Kingdom  
Tel: 44 (207) 638-7595  
Telex: 886107 SAKFIN G  
Fax: 44 (207) 638-1285

*Managing Director and Chief Executive:*  
Hirotaka Nagai

**Sakura Trust International Limited**

Ground and 1st Floors, 6 Broadgate,  
London EC2M 2RQ, United Kingdom  
Tel: 44 (207) 638-7595  
Telex: 886107 SAKFIN G  
Fax: 44 (207) 638-1285

*Managing Director and Chief Executive:*  
Hirotaka Nagai

**Sakura Dellsheer, Inc.**

*London Office*  
6 Broadgate,  
London EC2M 2RQ, United Kingdom  
Tel: 44 (207) 628-4507  
Fax: 44 (207) 628-4303

**Sakura Finanz (Deutschland) GmbH**

Königsallee 15,  
40212 Düsseldorf, F.R. Germany  
Tel: 49 (211) 88940  
Telex: 8588101, 8588575 MTKD D  
Fax: 49 (211) 328166

*Managing Director:*  
Yoshiharu Nakamura

**Sakura Bank (Luxembourg) S.A.**

33 Boulevard du Prince Henri,  
L-1724, Luxembourg  
Tel: 352-462436, 225455  
Telex: 60792 MTKBK LU,  
2466 MITKBK LU  
Fax: 352-462439, 475781

*Managing Director:*  
Koji Irisawa

**Sakura Bank (Schweiz) AG**

Lintheschergasse 10,  
8001 Zürich, Switzerland  
Tel: 41 (1) 212-3066  
Telex: 813826 MITK CH  
Fax: 41 (1) 212-3270

*President:*  
Kazuo Suga

**Turk Sakura Bank A.S.***Head Office*

Büyükdere Caddesi, Enka Han, 108/A,  
Esentepe, Istanbul, Turkey  
Tel: 90 (212) 275-2930  
Telex: 27718 SAKB TSAK  
Fax: 90 (212) 273-0860, 272-4270

*Director and General Manager:*  
Yoshiaki Kobayashi

*Izmir Branch*

Ataturk Caddesi, No. 40,  
Birson Han Kat 4-5 Izmir, Turkey  
Tel: 90 (232) 489-3840  
Telex: 53780, 53781  
Fax: 90 (232) 489-3234

# Information for Investors

(As of March 31, 1999)

**Paid-in Capital:** ¥1,042,706 million

**Number of Shares Authorized:** 11,036,307 thousand  
 Common 10,000,000 thousand  
 Preferred 1,036,307 thousand

**Number of Shares Issued:** 4,894,428 thousand  
 Common 4,083,121 thousand  
 Preferred Series II 11,307 thousand  
 Preferred Series III (Type-2) 800,000 thousand

**Number of Stockholders:**  
 Common 142,853  
 Preferred Series II 1  
 Preferred Series III (Type-2) 1

**Stock Exchange Listings:**  
 Common Tokyo, Osaka, Kyoto, Sapporo,  
 Frankfurt, Paris, Zürich, London  
 Preferred Series II —  
 Preferred Series III (Type-2) —

**Transfer Agent and Registrar:**  
 The Sakura Bank, Limited

**Common Stockholders' Meeting:**  
 The Ordinary General Meeting of Stockholders is held in Tokyo in June.

## Stock Price Range:

By Calendar Year	Price per Share		Nikkei Stock Average		TOPIX	
	High	Low	High	Low	High	Low
1995	1,500	991	21,552.81	15,749.77	1,712.73	1,239.67
1996	1,350	878	21,406.85	14,485.41	1,636.88	1,193.16
1997	1,250	600	22,666.80	17,303.65	1,722.13	1,326.60
1998	975	325	20,681.07	14,664.44	1,560.28	1,120.61
1999	404	165	16,731.92	12,879.97	1,280.73	980.11

By Month	Yen	Price per Share		Nikkei Stock Average		TOPIX		
		High	Low	High	Low	High	Low	
1998	April	487	394	16,536.66	15,395.43	1,254.74	1,183.90	
	May	462	403	15,884.82	15,143.03	1,232.29	1,188.18	
	June	441	327	15,830.27	14,715.38	1,230.38	1,156.47	
	July	413	322	16,731.92	15,944.36	1,280.73	1,233.98	
	August	334	218	16,165.08	13,915.63	1,245.24	1,086.99	
	September	292	200	14,913.49	13,406.39	1,132.65	1,043.57	
	October	330	165	14,295.56	12,879.97	1,074.29	980.11	
	November	361	293	15,207.77	13,952.75	1,164.59	1,065.84	
	December	341 (295)	280 (251)	14,986.62	13,706.73	1,147.15	1,074.18	
	1999	January	295	232	14,499.25	13,232.74	1,125.26	1,048.33
		February	286	240	14,500.65	13,898.08	1,124.13	1,083.09
		March	404	246	16,378.78	13,921.06	1,269.76	1,092.08

Notes: 1. Stock prices are those quoted on the First Section of the Tokyo Stock Exchange.

2. Figures in parentheses are stock prices of ex-rights.

## Contact:

Investor Relations Department  
 Planning Division  
 Tel: +81 3 3230-3111  
 Telex: J22378 MITKBK

## Auditors:

Showa Ota & Co.  
 Tohmatsu & Co.

## Major Stockholders:

	Number of Shares	
	(Thousands)	Percentage
Common		
Mitsui Mutual Life Insurance Company	147,752	3.61
The Taiyo Mutual Life Insurance Company	147,752	3.61
Nippon Life Insurance Company	147,752	3.61
Toyota Motor Corporation	89,588	2.19
The Chase Manhattan Bank, N.A. London	84,166	2.06
The Dai-ichi Mutual Life Insurance Company	80,682	1.97
The Mitsui Trust & Banking Co., Ltd.	80,483	1.97
Toshiba Corporation	64,961	1.59
Mitsui Fudosan Co., Ltd.	56,557	1.38
Mitsui & Co., Ltd.	53,277	1.30
Preferred Series II		
Sakura Finance (Bermuda) Trust	11,307	100.00
Preferred Series III (Type-2)		
The Resolution and Collection Bank Limited	800,000	100.00

