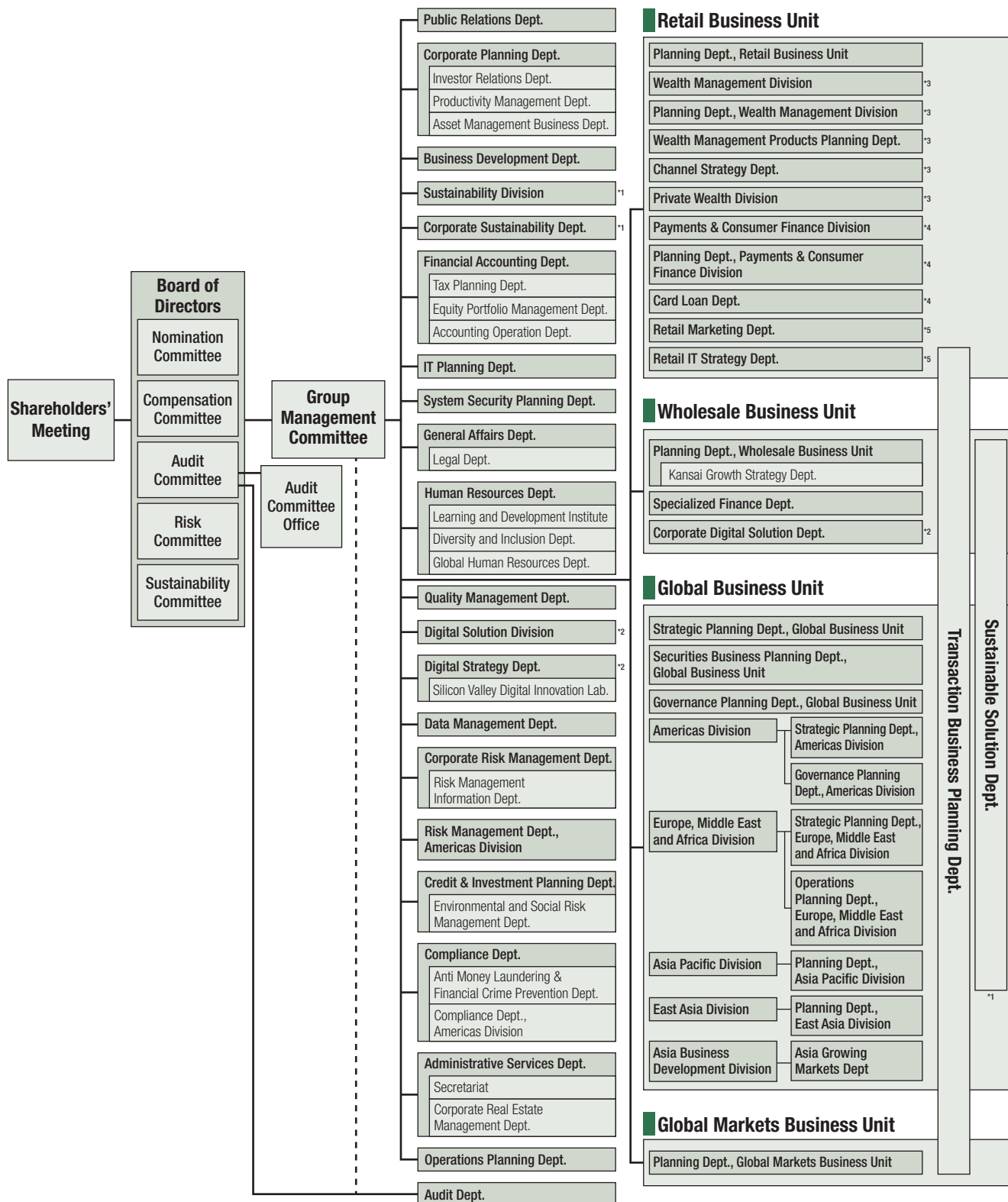


# Sumitomo Mitsui Financial Group Organization (as of June 30, 2022)



\*1 Belongs to Sustainability Division.

\*2 Belongs to Digital Solution Division.

\*3 Belongs to Wealth Management Business Division.

\*4 Belongs to Payments & Consumer Finance Division.

\*5 Belongs to Wealth Management Division and Payments & Consumer Finance Division.