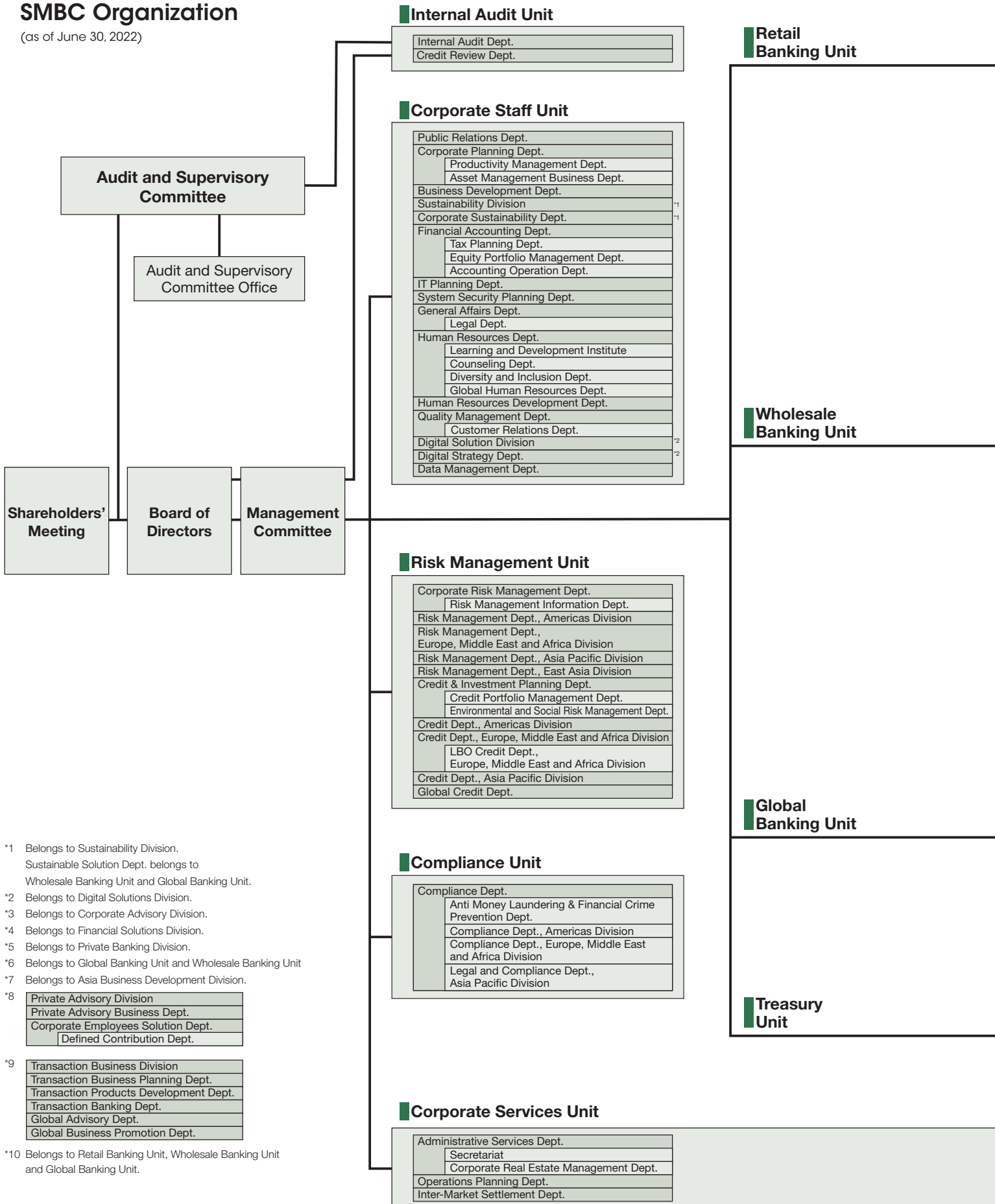


SMBC Organization

(as of June 30, 2022)



*1 Belongs to Sustainability Division.
Sustainable Solution Dept. belongs to Wholesale Banking Unit and Global Banking Unit.

*2 Belongs to Digital Solutions Division.

*3 Belongs to Corporate Advisory Division.

*4 Belongs to Financial Solutions Division.

*5 Belongs to Private Banking Division.

*6 Belongs to Global Banking Unit and Wholesale Banking Unit

*7 Belongs to Asia Business Development Division.

*8

Private Advisory Division
Private Advisory Business Dept.
Corporate Employees Solution Dept.
Defined Contribution Dept.

*9

Transaction Business Division
Transaction Business Planning Dept.
Transaction Products Development Dept.
Transaction Banking Dept.
Global Advisory Dept.
Global Business Promotion Dept.

*10 Belongs to Retail Banking Unit, Wholesale Banking Unit and Global Banking Unit.

