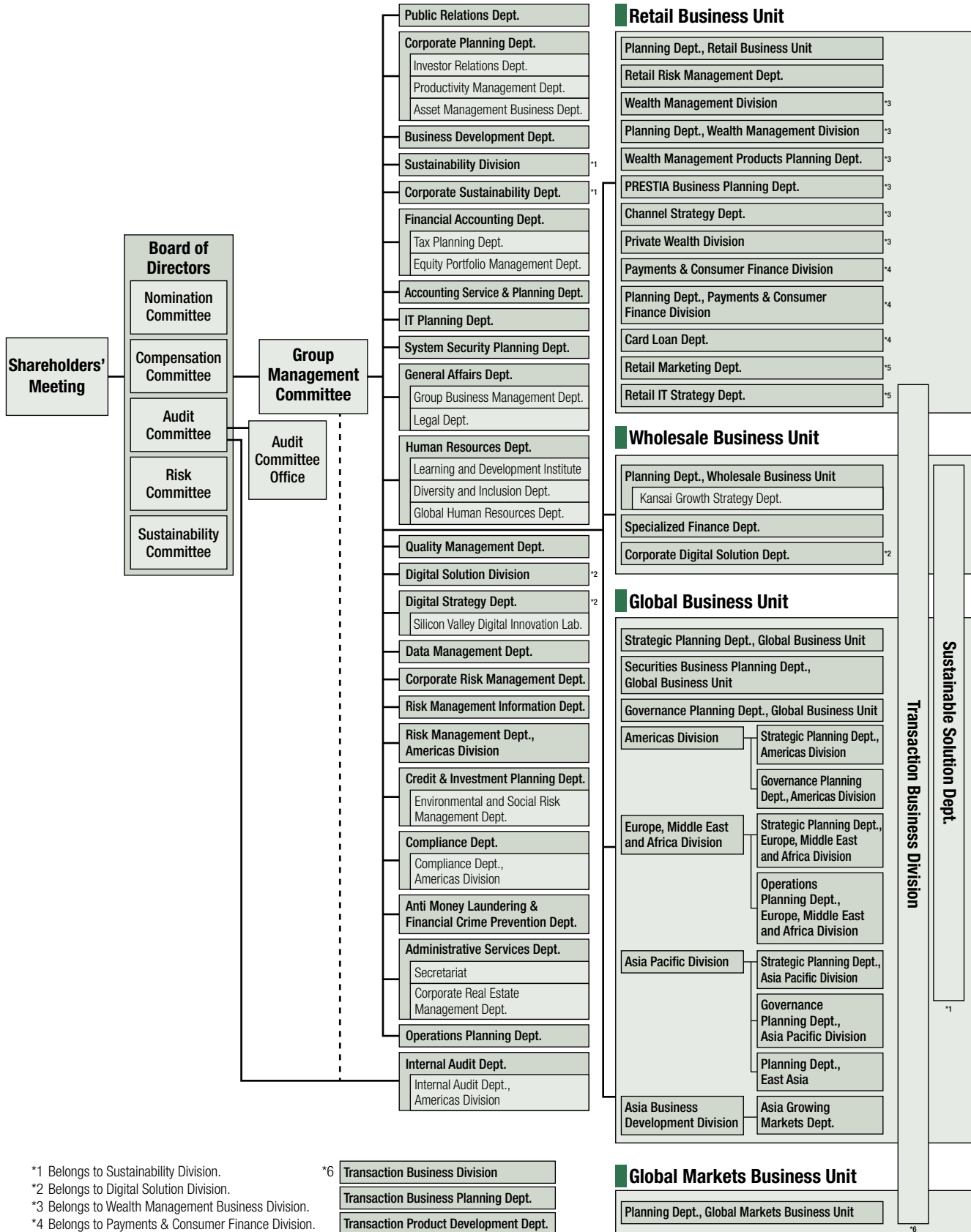


Sumitomo Mitsui Financial Group Organization (as of June 30, 2023)



*1 Belongs to Sustainability Division.

*2 Belongs to Digital Solution Division.

*3 Belongs to Wealth Management Business Division.

*4 Belongs to Payments & Consumer Finance Division.

*5 Belongs to Wealth Management Division and Payments & Consumer Finance Division.

*6

- Transaction Business Division
- Transaction Business Planning Dept.
- Transaction Product Development Dept.