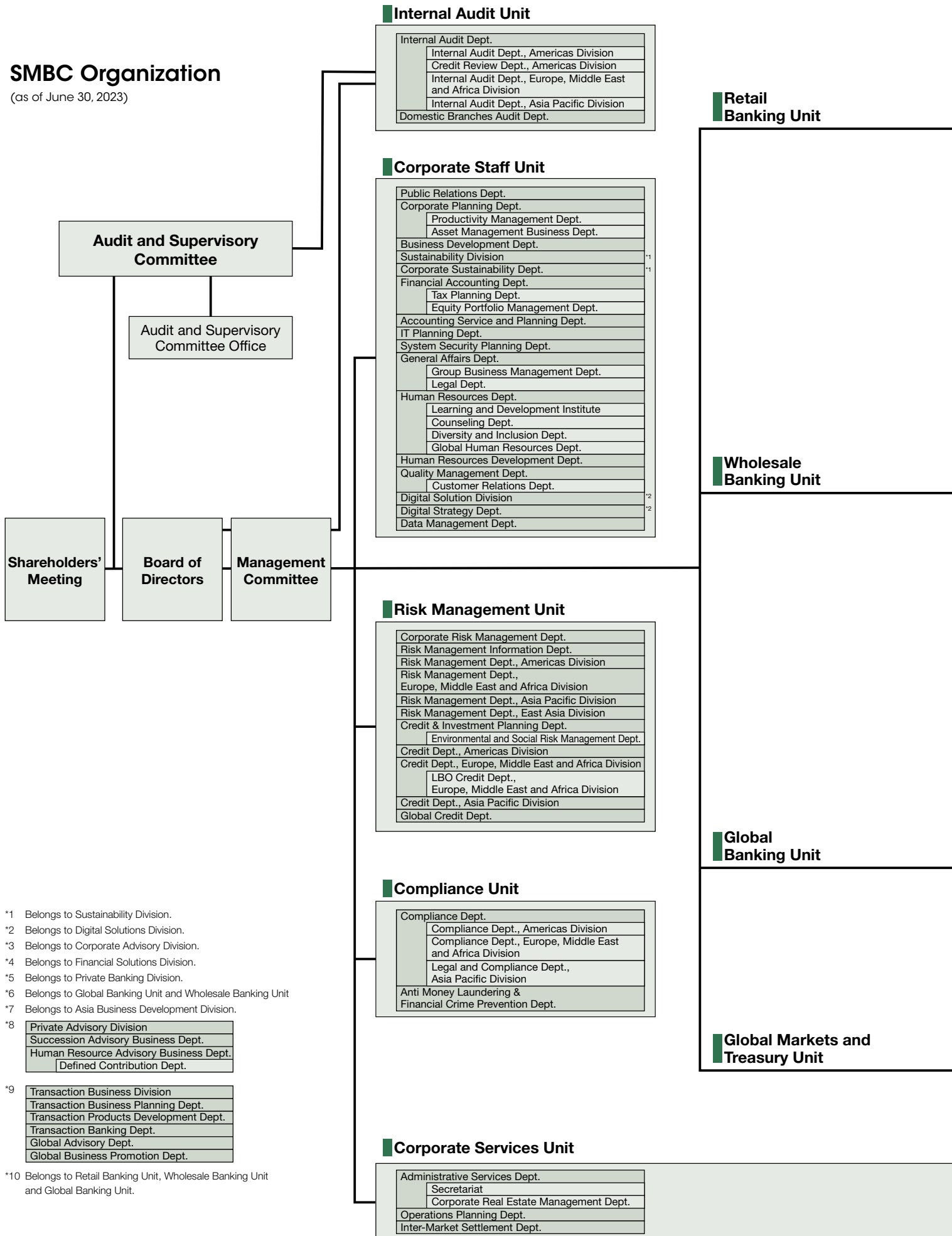


# SMBC Organization

(as of June 30, 2023)



\*1 Belongs to Sustainability Division.  
 \*2 Belongs to Digital Solutions Division.  
 \*3 Belongs to Corporate Advisory Division.  
 \*4 Belongs to Financial Solutions Division.  
 \*5 Belongs to Private Banking Division.  
 \*6 Belongs to Global Banking Unit and Wholesale Banking Unit  
 \*7 Belongs to Asia Business Development Division.  
 \*8

Private Advisory Division
Succession Advisory Business Dept.
Human Resource Advisory Business Dept.
Defined Contribution Dept.

\*9

Transaction Business Division
Transaction Business Planning Dept.
Transaction Products Development Dept.
Transaction Banking Dept.
Global Advisory Dept.
Global Business Promotion Dept.

\*10 Belongs to Retail Banking Unit, Wholesale Banking Unit and Global Banking Unit.

